

PALM BEACH POLO EQUESTRIAN CLUB PLAT NO. 1 OF WELLINGTON COUNTRYPLACE, P.U.D.

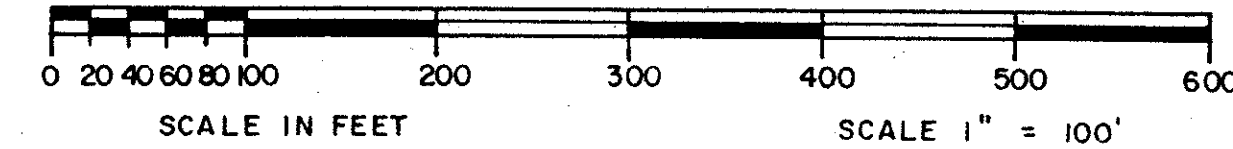
LYING IN LANDS FORMERLY PLATTED AS CHUKKER HILL OF WELLINGTON COUNTRYPLACE - P.U.D
IN PLAT BOOK 40, PAGES 44 - 46 AND ABANDONED PER O.R.B. 5247, PAGE 393

PUBLIC RECORDS OF PALM BEACH COUNTY

IN PART OF SECTION 20, TOWNSHIP 44 SOUTH, RANGE 41 EAST, PALM BEACH COUNTY, FLORIDA.

SHEET NO. 2 OF 2 SHEETS

MARCH 1988



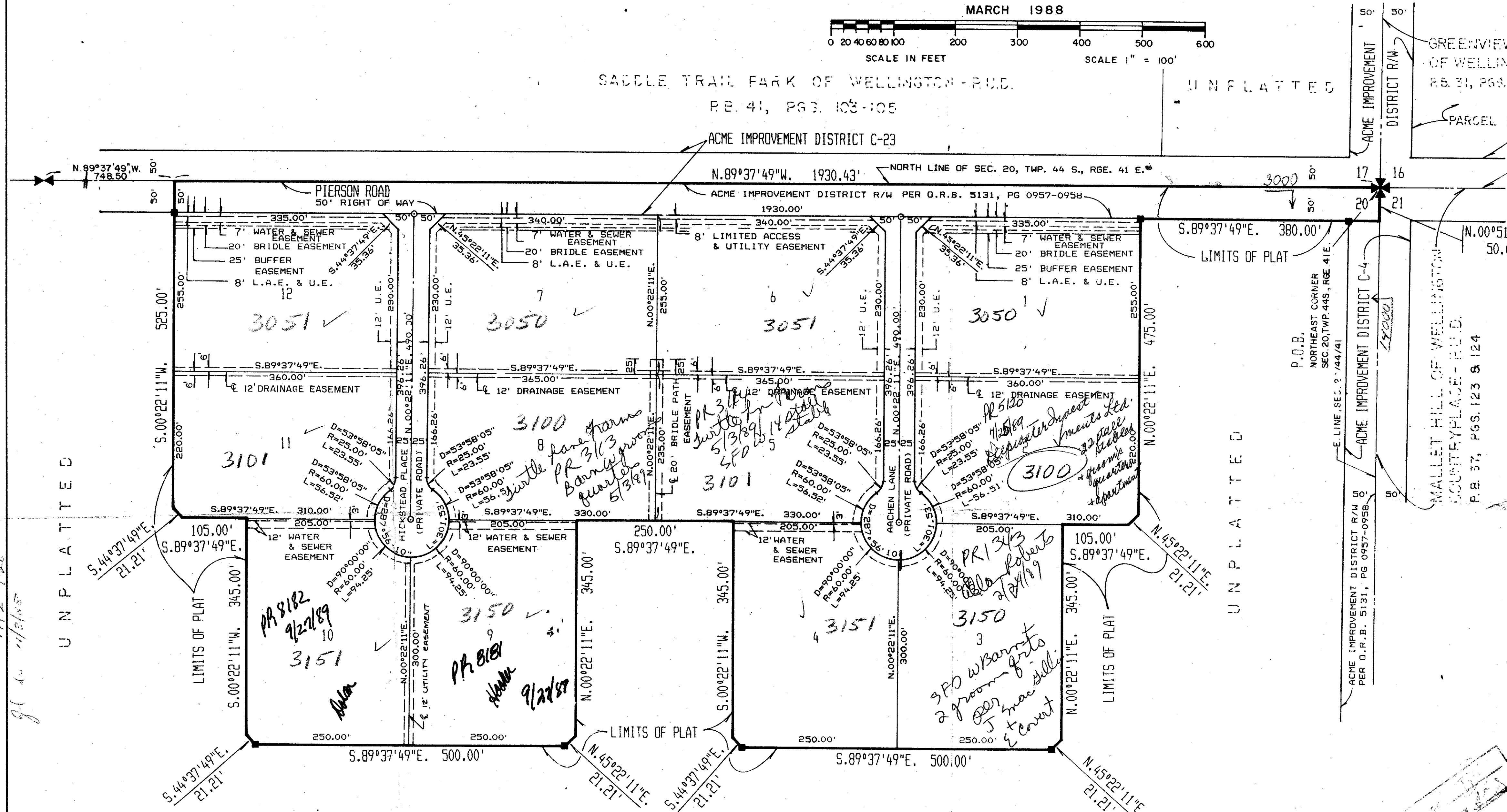
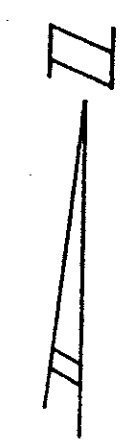
SADDLE TRAIL PARK OF WELLINGTON - P.U.D.

P.B. 41, PGS. 103-105

ACME IMPROVEMENT DISTRICT C-23

UNPLATTED

GREENVIEW SHORES NO. 2
OF WELLINGTON - (P.U.D.)
P.B. 31, PGS. 120-126
PARCEL H



UNPLATTED
TAX 728
9/22/89

UNPLATTED

UNPLATTED

0333-003

SCALE: 1" = 100'	NICK MILLER, INC. Land Surveying	DRAWN BY:
DATE: MARCH 1988	Planning & Development Consultants	CHK
PALM BEACH POLO EQUESTRIAN CLUB PLAT NO. 1, WELLINGTON COUNTRYPLACE - P.U.D.		
2560 RCA Blvd. • Suite 105 Palm Beach Gardens, Florida 33410 (305) 627-5200		DRAWING NUMBER BB-0003A

Duplicate 5/5/89